

# Bolshezemelskaya Tundra West

## Land use

IPY project MODIL-NAO  
Excerpt map from GIS database

Compiled by W.K. Dallmann  
Norwegian Polar Institute, 2009



### Legend:

#### Settlements and infrastructure

- Town
- Settlement, mainly Russian population
- Settlement, significant proportion of indigenous population
- Settlement, abandoned
- Cabin(s) (from satellite image)
- Historical site
- ✈ Large airport
- ✈ Small airport
- ✈ Heliport
- ⚓ Seaport
- ⚓ Landing place for ships

#### Roads and tracks (from satellite images):

- Road
- Track, multiple (ca. 50-200 m broad)
- Track, single or less than ca. 50 m broad
- Forest corridor

2003 High-resolution satellite imagery on GoogleEarth: more detailed observations  
2005 Year of low-resolution satellite imagery used for interpretation

#### Traditional land use: places from questionnaires, N=15

- ▲ Camp site (month)
- ▲ Camp site, former
- Multi-use site
- Fishing site
- Fishing site, former
- Hunting site
- Calving site
- Slaughtering site
- ★ Sacred site

#### Traditional land use: areas from questionnaires, N=15

- Calving area
- Gathering area
- Hunting area
- Hunting area, former
- Sea mammal hunting area

#### Areas assigned to reindeer herding cooperatives

- 5 SPK Naryan-Marskoe OPKH
- 6 SPK Naryana-Ty
- 7 SPK im. Vyucheskogo
- 9 SPK Kharp and SPK Erv
- 10 SPK Izhemskiy olenovod
- 11 SPK Druzha narodov

#### Areas assigned to fishing cooperatives

- 21 SPK RK Pobeda
- 22 SPK RK Rodina
- 23 SPK RK im. Lenina

#### Other installations:

- ▲ Hydrocarbon production site
- ▲ Drilling or production site
- Industrial facility
- Working site
- ★ Gravel pit

#### Oil fields

- Gas and gas condensate field
- Oil and gas condensate field
- Oil field

Kumzhin. Name of field

#### Industrial facilities

- Industrial settlement
- ▲ Oil terminal

#### Pipelines:

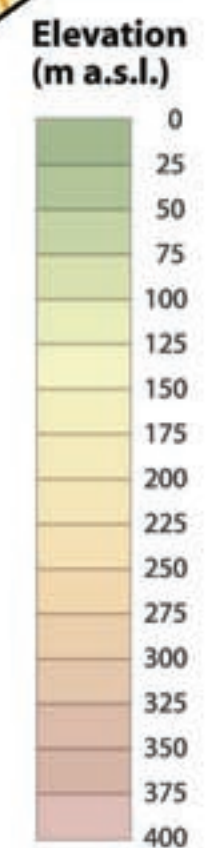
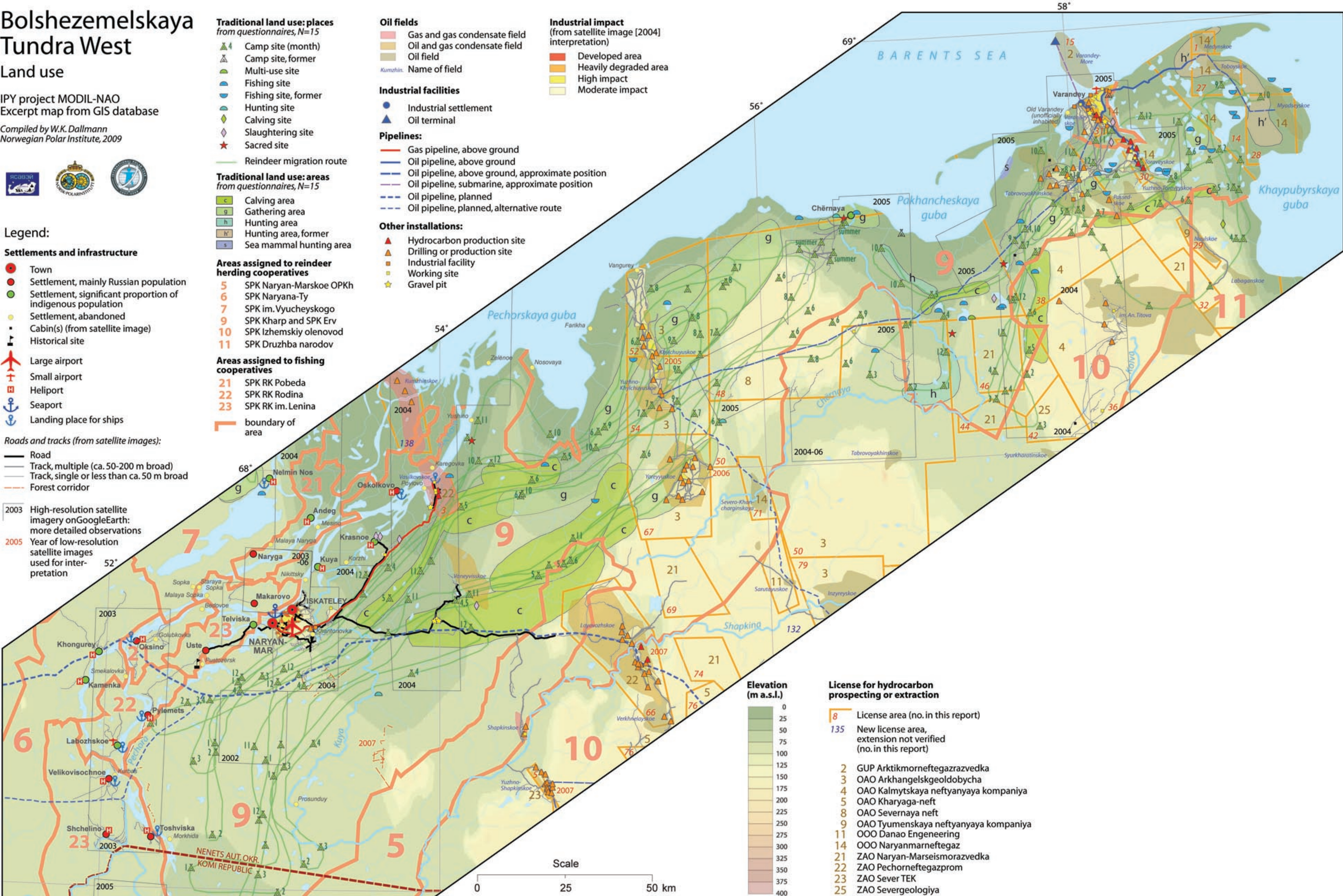
- Gas pipeline, above ground
- Oil pipeline, above ground
- Oil pipeline, above ground, approximate position
- Oil pipeline, submarine, approximate position
- Oil pipeline, planned
- Oil pipeline, planned, alternative route

#### Other installations:

- ▲ Hydrocarbon production site
- ▲ Drilling or production site
- Industrial facility
- Working site
- ★ Gravel pit

#### Industrial impact (from satellite image [2004] interpretation)

- Developed area
- Heavily degraded area
- High impact
- Moderate impact



#### License for hydrocarbon prospecting or extraction

- 8 License area (no. in this report)
- 135 New license area, extension not verified (no. in this report)
- 2 GUP Arktikmorneftegazrazvedka
- 3 OAO Arkhangel'skgeoldobycha
- 4 OAO Kalmytskaya neftnyanaya kompaniya
- 5 OAO Kharyaga-neft
- 8 OAO Severnaya neft
- 9 OAO Tyumenskaya neftnyanaya kompaniya
- 11 OOO Danao Engineering
- 14 OOO Naryanmarneftegaz
- 21 ZAO Naryan-Marseismorazvedka
- 22 ZAO Pechorneftegazprom
- 23 ZAO Sever TEK
- 25 ZAO Severgeologiya

