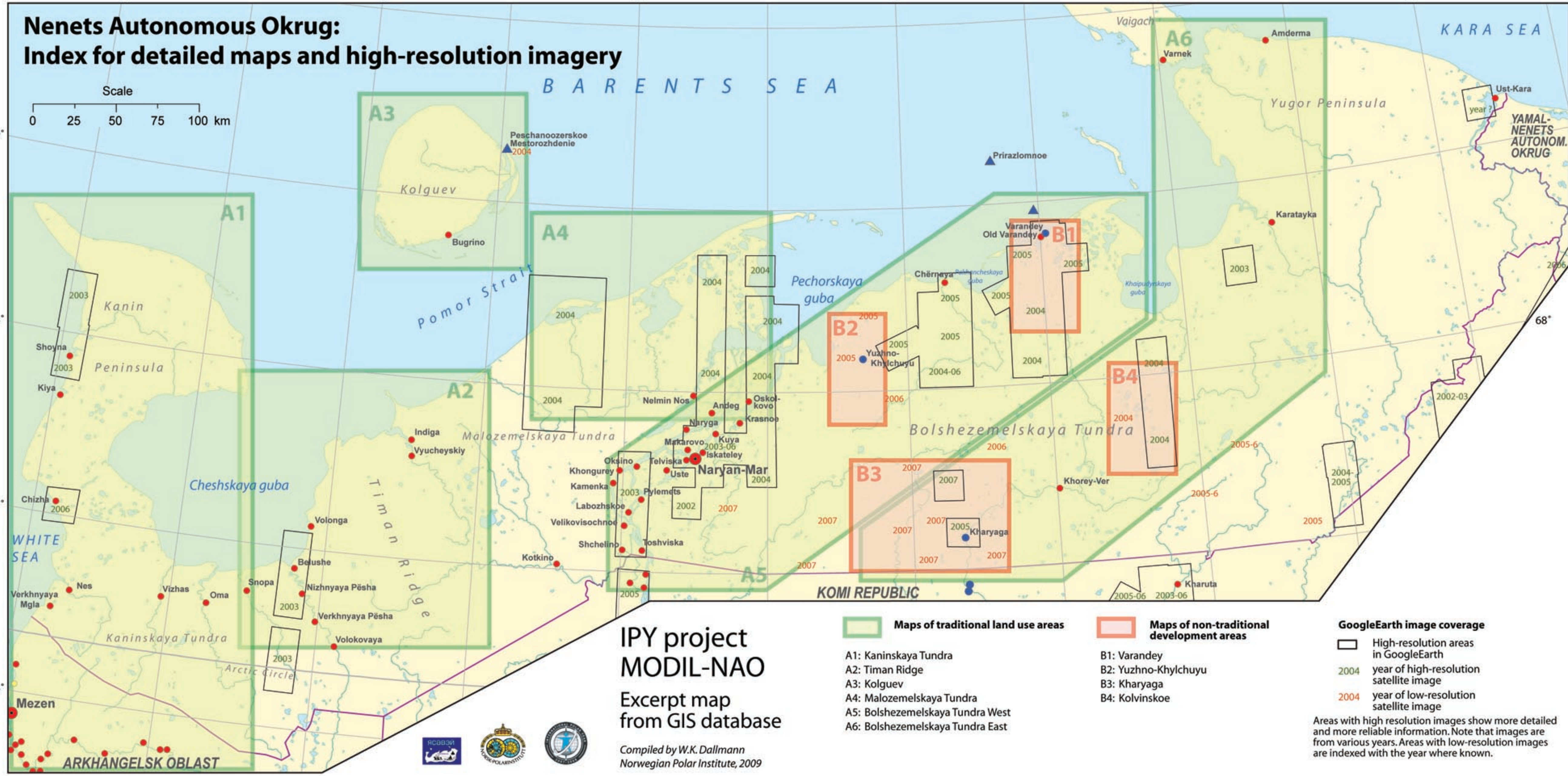
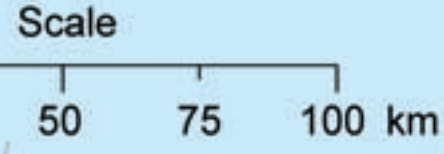


Nenets Autonomous Okrug: Index for detailed maps and high-resolution imagery



**IPY project
MODIL-NAO**
Excerpt map
from GIS database

Compiled by W.K. Dallmann
Norwegian Polar Institute, 2009

- Maps of traditional land use areas**
- A1: Kaninskaya Tundra
 - A2: Timan Ridge
 - A3: Kolguev
 - A4: Malozemelskaya Tundra
 - A5: Bolshezemelskaya Tundra West
 - A6: Bolshezemelskaya Tundra East

- Maps of non-traditional development areas**
- B1: Varandey
 - B2: Yuzhno-Khylchuyu
 - B3: Kharyaga
 - B4: Kolvinskoe

- GoogleEarth image coverage**
- High-resolution areas in GoogleEarth
 - 2004 year of high-resolution satellite image
 - 2004 year of low-resolution satellite image

Areas with high resolution images show more detailed and more reliable information. Note that images are from various years. Areas with low-resolution images are indexed with the year where known.

